

# Louisa

*Louisa is an on-trend textural plain,  
suitable for upholstery & soft furnishings*

## Specifications

**Fabric Name** Louisa

**Designer** Surface Textiles

**Origin** Australia

**Weave** Jacquard

**Composition** 61% Polyester, 39% Acrylic

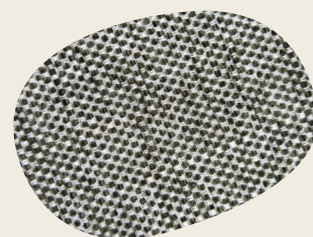
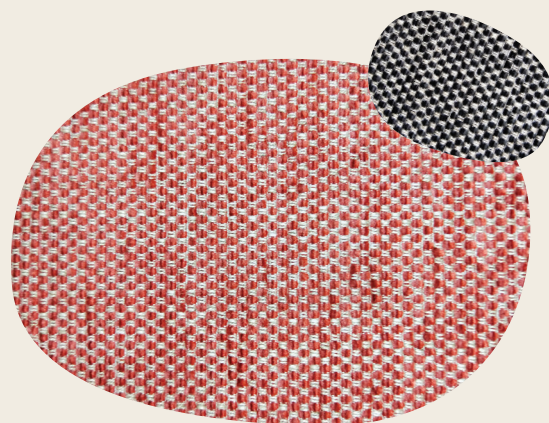
**Width** 137cm

**Weight** 456gsm

**Pattern Repeat** NA, all over plain

**Roll length** approx. 50m

**Minimums for specials** 100m



## Performance

**Abrasion Results** Heavy Duty Commercial 68,000 Martindale

**Certification FR Test** 1530.3

**Colour fastness to light** Greater than 6

**Fabric Care** CTA Care Code 1

**Pilling** (TM196) 5

**Seam Slippage** AS2001.2.22A - 2006 Warp 3.0 Weft 3.0

**Usage** Upholstery and soft furnishings

**Surface Treatment** Water / Stain repellent  
Anti-microbial / Anti-bacterial

*Exact colour matching cannot be guaranteed  
between batches, please allow -5/+5 variances.*

**surface**  
TEXTILES