

# Louisa

*Louisa is an on-trend textural plain,  
suitable for upholstery & soft furnishings*

## Specifications

**Fabric Name:** Louisa

**Designer:** Surface Textiles

**Origin:** Australia

**Weave:** Jacquard

**Composition:** 61% Polyester, 39% Acrylic

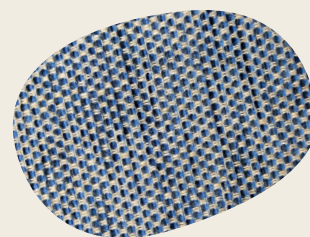
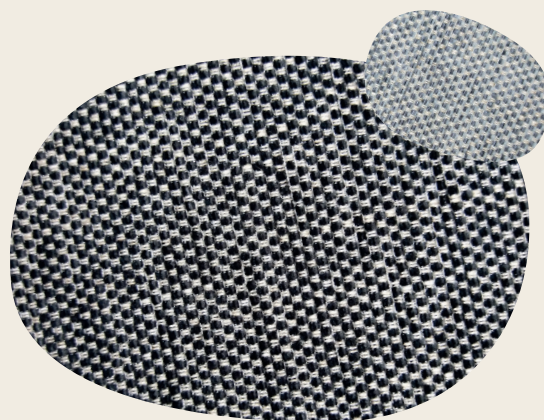
**Width:** 137cm

**Weight:** 456gsm

**Pattern Repeat:** NA, all over plain

**Roll length:** approx. 50m

**Minimums for specials:** 100m



## Performance

**Abrasion Results:** Heavy Duty Commercial 68,000 Martindale

**Certification FR Test:** 1530.3

**Colour fastness to light:** 6

**Fabric Care:** CTA Care Code 1

**Pilling:** (TM196) 5

**Seam Slippage:** AS2001.2.22A - 2006 Warp 3.0 Weft 3.0

**Usage:** Upholstery and soft furnishings

*Exact colour matching cannot be guaranteed  
between batches, please allow -5/+5 variances.*



TEXTILES